



**QUICK  
FACTS**  

---

**STUDENT  
SUCCESS**  
**2009/2010**

Howard College makes every effort to help our students reach their maximum potential by integrating core concepts of critical thinking into our daily business and our classrooms. We have varied educational opportunities available to meet the ever-changing needs of all learners through our four campuses.

**2009-2010**

**District Awards by Type**

<i>Core Completers</i>	<i># of Degrees Awarded</i>	<i>Certificates Awarded</i>	<i>Total Awarded</i>
110	277	241	628

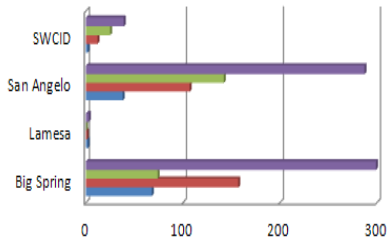
**2009-2010**

**Graduation & Persistence Rates**

	<b>Howard</b>	<b>SWCID</b>	<b>State Avg</b>
Graduation & Persistence Rate Entering Cohort 2002	36.3%	34.2%	41.5%
3-yr Graduation Rate Entering Cohort 2005	23.1%	18.8%	11.0%
Transfers Entering Cohort 2003	44.1%	10.9%	29.0%
Non-Transfer Completers	9.4%	32.6%	8.1%
Non Completers	46.5%	56.5%	63.0%

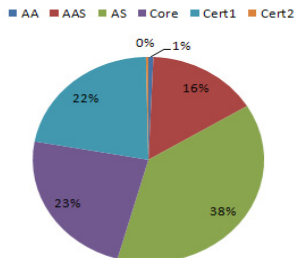
## 2009-2010 Degrees Awarded

### Awards by Campus and Type

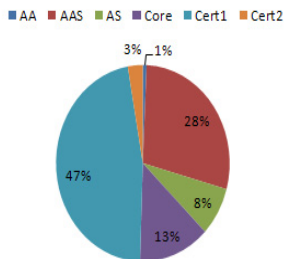


	Big Spring	Lamesa	San Angelo	SWCID
TOTAL # Awarded	299	3	287	39
Certificates # Awarded	74	0	142	25
Degrees # Awarded	157	1	107	12
Core Completers # Awarded	68	2	38	2

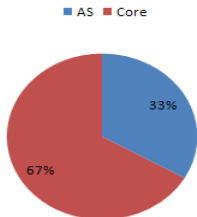
### Big Spring Campus Awards by Type



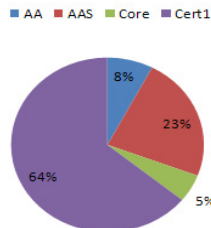
### San Angelo Campus Awards by Type



### Lamesa Campus Awards by Type



### SWCID Campus Awards by Type



## Excellence

### Licensure Rate 2008

*Pass rate for programs whose graduates are required to pass a licensure exam to practice in a field:*

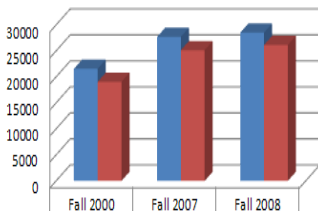
Cosmetology:	94%	Nurse, Registered:	93%
Dental Hygienist:	100%	Nurse, LVN:	100%
Respiratory Care:	100%	Criminal Justice:	100%
Radiologic Technology:	100%		
Emergency Medical Services:	63%		
Nail Technician/Specialist and Manicurist:	100%		

## Significant Recognitions 2009

Number of members of Phi Theta Kappa:	225
Number of students eligible for Phi Theta Kappa membership:	428

## Success Trend

### Course Completion Rate Undergraduate State Funded Credit Hours



■ Beginning semester credit hours	21554	27711	28526
■ Ending semester credit hours	19054	25155	26150